

These numbers provide a preliminary summary of Criminal Justice Reform data. Statistics continue to be reviewed, revised, and validated.

Chart A - Warrants
Initial Release Decisions for Criminal Justice Reform Eligible Defendants
January 1, 2022 - December 31, 2022

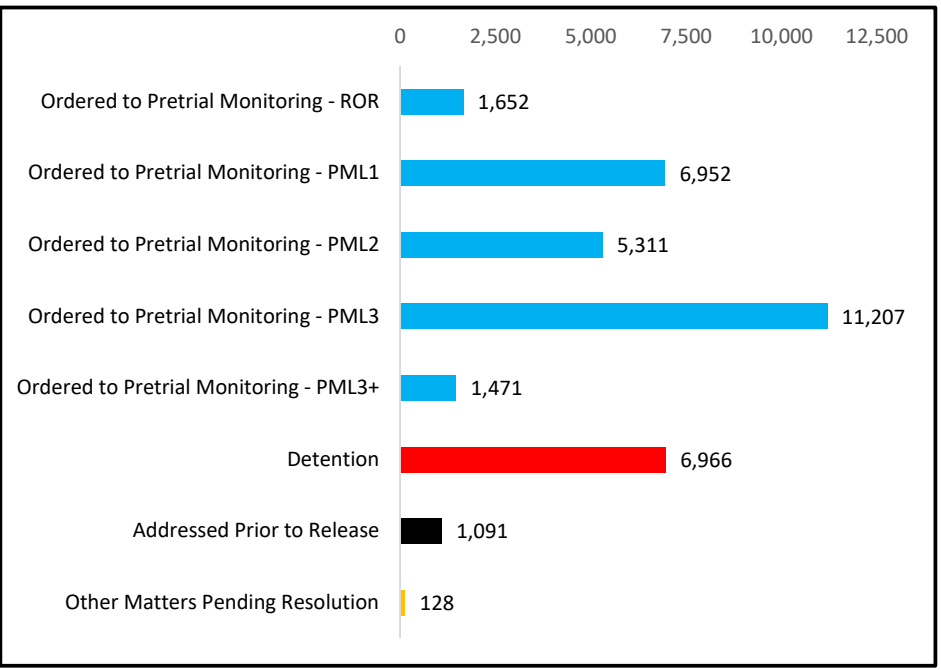
	Defendants	Addressed Prior to Initial Release Decision (i.e., Remand or Dismissal)		Defendants Ordered to Pretrial Monitoring System										Other Matters Pending Resolution							
				Monitoring Level														Detention		Detention Motions	
				ROR		PML1		PML2		PML3		PML3+		#	%	#	%				
				#	%	#	%	#	%	#	%	#	%					#	%	#	%
Atlantic	1,111	28	2.5%	31	2.8%	130	11.7%	133	12.0%	221	19.9%	8	0.7%	554	49.9%	6	0.5%	0	0.0%		
Bergen	1,512	32	2.1%	158	10.4%	231	15.3%	272	18.0%	446	29.5%	71	4.7%	301	19.9%	1	0.1%	0	0.0%		
Burlington	1,321	26	2.0%	42	3.2%	223	16.9%	243	18.4%	416	31.5%	39	3.0%	332	25.1%	0	0.0%	0	0.0%		
Camden	3,493	93	2.7%	51	1.5%	215	6.2%	465	13.3%	1883	53.9%	183	5.2%	602	17.2%	1	0.0%	0	0.0%		
Cape May	493	17	3.4%	9	1.8%	54	11.0%	46	9.3%	165	33.5%	2	0.4%	199	40.4%	1	0.2%	0	0.0%		
Cumberland	1,033	41	4.0%	30	2.9%	163	15.8%	129	12.5%	305	29.5%	6	0.6%	355	34.4%	4	0.4%	0	0.0%		
Essex	5,929	412	6.9%	111	1.9%	1565	26.4%	703	11.9%	1847	31.2%	285	4.8%	976	16.5%	19	0.3%	11	0.2%		
Gloucester	1,020	15	1.5%	70	6.9%	197	19.3%	205	20.1%	316	31.0%	17	1.7%	199	19.5%	0	0.0%	1	0.1%		
Hudson	3,883	98	2.5%	383	9.9%	792	20.4%	632	16.3%	1267	32.6%	165	4.2%	528	13.6%	8	0.2%	10	0.3%		
Hunterdon	214	5	2.3%	5	2.3%	49	22.9%	43	20.1%	72	33.6%	1	0.5%	39	18.2%	0	0.0%	0	0.0%		
Mercer	2,528	72	2.8%	270	10.7%	551	21.8%	292	11.6%	726	28.7%	297	11.7%	310	12.3%	10	0.4%	0	0.0%		
Middlesex	2,118	90	4.2%	183	8.6%	457	21.6%	260	12.3%	604	28.5%	119	5.6%	385	18.2%	19	0.9%	1	0.0%		
Monmouth	1,717	25	1.5%	47	2.7%	394	22.9%	258	15.0%	649	37.8%	7	0.4%	325	18.9%	11	0.6%	1	0.1%		
Morris	590	25	4.2%	22	3.7%	119	20.2%	80	13.6%	155	26.3%	3	0.5%	179	30.3%	6	1.0%	1	0.2%		
Ocean	1,872	16	0.9%	69	3.7%	324	17.3%	466	24.9%	684	36.5%	79	4.2%	234	12.5%	0	0.0%	0	0.0%		
Passaic	2,831	47	1.7%	46	1.6%	836	29.5%	635	22.4%	564	19.9%	57	2.0%	636	22.5%	9	0.3%	1	0.0%		
Salem	309	11	3.6%	16	5.2%	44	14.2%	39	12.6%	95	30.7%	4	1.3%	100	32.4%	0	0.0%	0	0.0%		
Somerset	646	9	1.4%	33	5.1%	162	25.1%	103	15.9%	205	31.7%	7	1.1%	127	19.7%	0	0.0%	0	0.0%		
Sussex	180	4	2.2%	7	3.9%	22	12.2%	37	20.6%	50	27.8%	5	2.8%	55	30.6%	0	0.0%	0	0.0%		
Union	1,568	22	1.4%	61	3.9%	373	23.8%	186	11.9%	346	22.1%	116	7.4%	460	29.3%	4	0.3%	0	0.0%		
Warren	410	3	0.7%	8	2.0%	51	12.4%	84	20.5%	191	46.6%	0	0.0%	70	17.1%	1	0.2%	2	0.5%		
State	34,778	1,091	3.1%	1,652	4.8%	6,952	20.0%	5,311	15.3%	11,207	32.2%	1,471	4.2%	6,966	20.0%	100	0.3%	28	0.1%		

Note: This report is based on defendant which is defined as a Criminal Justice Reform eligible defendant with CDR2 warrants filed within three days of each other for the defendant. The number of complaints presented in Charts A, D, and E do not include some complaints that may have been expunged during the time period covered in this document. Counts of detained defendants includes motions to revoke release.

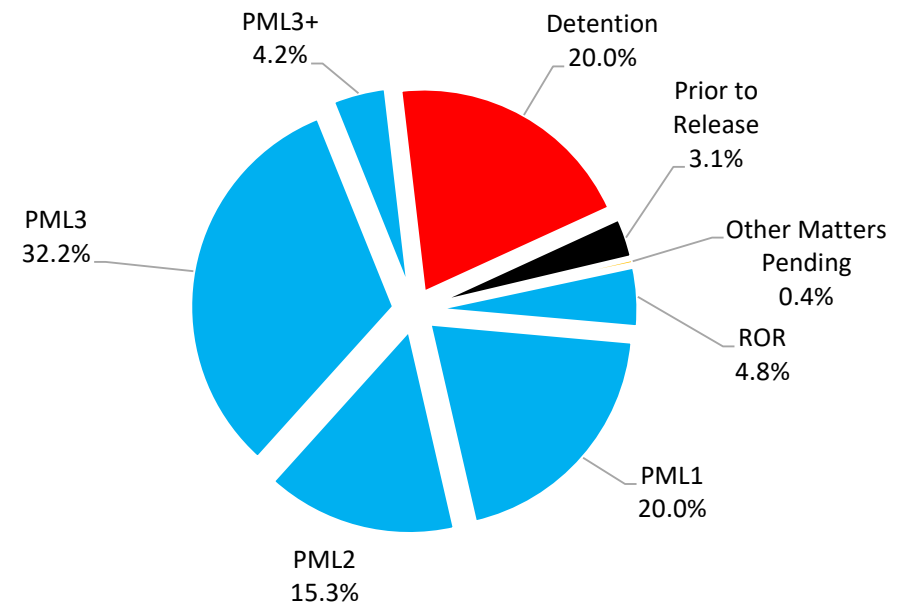
These numbers provide a preliminary summary of Criminal Justice Reform data. Statistics continue to be reviewed, revised, and validated.

Chart A - Supplemental Graphs
Initial Release Decisions for Criminal Justice Reform Eligible Defendants
January 1, 2022 - December 31, 2022

Initial Release Decisions by Type of Decision (number of defendants)



Initial Release Decisions by Type of Decision (percentage of defendants)



These numbers provide a preliminary summary of Criminal Justice Reform data. Statistics continue to be reviewed, revised, and validated.

Chart B
Detention Motions for Criminal Justice Reform Eligible Defendants
Decided (Granted/ Denied) and Withdrawn
January 1, 2022 - December 31, 2022
Preliminary Statistical Report

	Granted Motions		Denied Motions		Total Decisions by a Judge		Motions Filed then Withdrawn or Dismissed		Total Motions Filed, including Granted, Denied, Withdrawn or Dismissed
	Number	Percent of Decisions	Number	Percent of Decisions	Number	Percent of Total Motions	Number	Percent of Total	Number
Atlantic	554	62.7%	330	37.3%	884	97.0%	27	3.0%	911
Bergen	301	70.2%	128	29.8%	429	71.6%	170	28.4%	599
Burlington	332	56.1%	260	43.9%	592	83.4%	118	16.6%	710
Camden	602	58.8%	421	41.2%	1023	63.1%	598	36.9%	1,621
Cape May	199	58.4%	142	41.6%	341	93.2%	25	6.8%	366
Cumberland	355	46.1%	415	53.9%	770	93.2%	56	6.8%	826
Essex	976	61.3%	617	38.7%	1593	84.0%	303	16.0%	1,896
Gloucester	199	48.5%	211	51.5%	410	70.2%	174	29.8%	584
Hudson	528	46.4%	611	53.6%	1139	93.7%	76	6.3%	1,215
Hunterdon	39	73.6%	14	26.4%	53	56.4%	41	43.6%	94
Mercer	310	61.1%	197	38.9%	507	67.2%	248	32.8%	755
Middlesex	385	69.7%	167	30.3%	552	63.8%	313	36.2%	865
Monmouth	325	54.3%	274	45.7%	599	90.8%	61	9.2%	660
Morris	179	73.1%	66	26.9%	245	80.1%	61	19.9%	306
Ocean	234	28.0%	602	72.0%	836	89.4%	99	10.6%	935
Passaic	636	66.3%	323	33.7%	959	96.4%	36	3.6%	995
Salem	100	42.0%	138	58.0%	238	84.7%	43	15.3%	281
Somerset	127	44.7%	157	55.3%	284	93.7%	19	6.3%	303
Sussex	55	74.3%	19	25.7%	74	86.0%	12	14.0%	86
Union	460	69.1%	206	30.9%	666	88.3%	88	11.7%	754
Warren	70	65.4%	37	34.6%	107	50.7%	104	49.3%	211
State	6,966	56.6%	5,335	43.4%	12,301	82.2%	2,672	17.8%	14,973

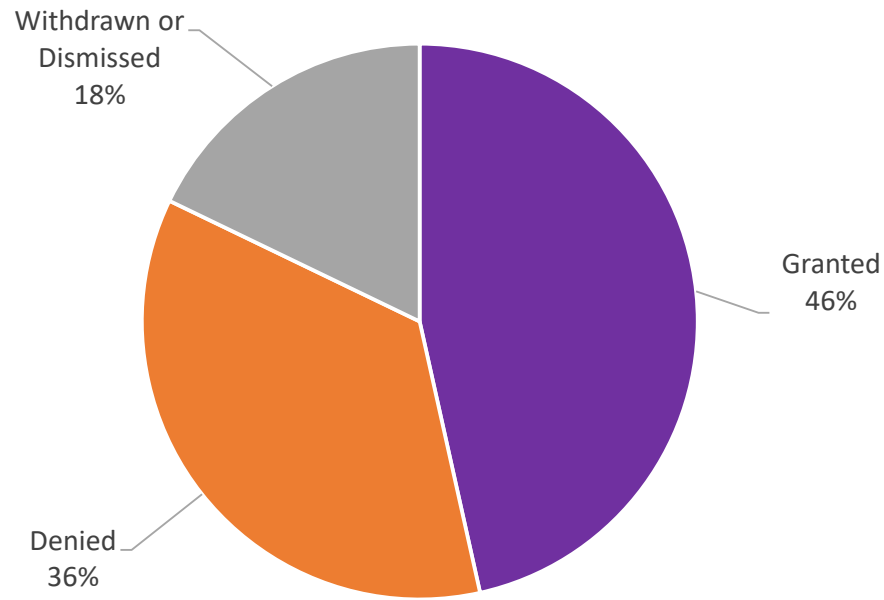
The number of granted motions shown on this chart represents all detention motions filed during the process. There may be multiple detention motions filed for a single defendant, i.e., a motion to revoke release or reopen a hearing on a defendant previously released.

Table includes complete motions that were granted, denied, withdrawn or dismissed.

These numbers provide a preliminary summary of Criminal Justice Reform data. Statistics continue to be reviewed, revised, and validated.

Chart B - Supplemental Graph
Detention Motions for Criminal Justice Reform Eligible Defendants
Defendants Arrested January 1, 2022- December 31, 2022

Detention Motions Granted, Denied, Withdrawn or Dismissed



Detention Motions	
Granted	6,966
Denied	5,335
Withdrawn or Dismissed	2,672
Total	14,973

Chart C
Nonsentenced Pretrial Jail Population
12/31/2022

	December 31, 2015 to December 31, 2022										January 1, 2017 to December 31, 2022			
	December 31, 2015	December 31, 2016	December 31, 2017	December 31, 2018	December 31, 2019	December 31, 2020	December 31, 2021	December 31, 2022	Percent Change		January 1, 2017	December 31, 2022	Number	Percent
									2015-2022	2021-2022				
Atlantic	384	348	325	292	283	369	398	378	-1.6%	-5.0%	348	378	30	8.6%
Bergen	476	341	226	224	281	285	297	369	-22.5%	24.2%	347	369	22	6.3%
Burlington	380	319	299	221	213	252	243	237	-37.6%	-2.5%	321	237	-84	-26.2%
Camden	838	628	438	396	399	568	619	642	-23.4%	3.7%	637	642	5	0.8%
Cape May	171	164	136	111	106	124	141	133	-22.2%	-5.7%	166	133	-33	-19.9%
Cumberland	295	262	251	222	236	225	286	293	-0.7%	2.4%	266	293	27	10.2%
Essex	1,543	1,179	889	857	876	1,014	1,027	1,062	-31.2%	3.4%	1,192	1,062	-130	-10.9%
Gloucester	238	159	187	129	121	136	156	159	-33.2%	1.9%	164	159	-5	-3.0%
Hudson	744	541	463	348	415	608	691	666	-10.5%	-3.6%	541	666	125	23.1%
Hunterdon	54	42	26	32	23	20	12	22	-59.3%	83.3%	43	22	-21	-48.8%
Mercer	561	435	302	302	234	300	407	403	-28.2%	-1.0%	433	403	-30	-6.9%
Middlesex	654	616	446	379	385	265	370	442	-32.4%	19.5%	617	442	-175	-28.4%
Monmouth	675	533	425	360	321	326	407	407	-39.7%	0.0%	542	407	-135	-24.9%
Morris	151	97	124	110	125	106	118	137	-9.3%	16.1%	98	137	39	39.8%
Ocean	308	262	205	170	195	171	173	198	-35.7%	14.5%	266	198	-68	-25.6%
Passaic	731	593	557	455	401	484	650	652	-10.8%	0.3%	592	652	60	10.1%
Salem	73	58	59	50	53	70	97	93	27.4%	-4.1%	63	93	30	47.6%
Somerset	126	80	79	83	77	62	102	83	-34.1%	-18.6%	81	83	2	2.5%
Sussex	90	48	68	39	41	27	31	32	-64.4%	3.2%	48	32	-16	-33.3%
Union	566	456	356	289	269	364	433	420	-25.8%	-3.0%	516	420	-96	-18.6%
Warren	79	56	44	55	43	40	49	73	-7.6%	49.0%	56	73	17	30.4%
State Total	9,137	7,217	5,905	5,124	5,097	5,816	6,707	6,901	-24.5%	2.9%	7,337	6,901	-436	-5.9%
*Adjusted State Total	8,899	7,058	5,718	4,995	4,976	5,680	6,551	6,742	-24.2%	2.9%	7,173	6,742	-431	-6.0%

* Note: The Gloucester County Jail was closed and the inmates were moved to the Salem County Jail on May 3, 2013. Depending on various factors, the inmates could then stay in the Salem County Jail or go to one of 4 counties: Cumberland, Camden, Essex or Burlington. The Adjusted State Total removes Gloucester from the State Total after May 3, 2013 so that the inmates are not counted twice in the total.

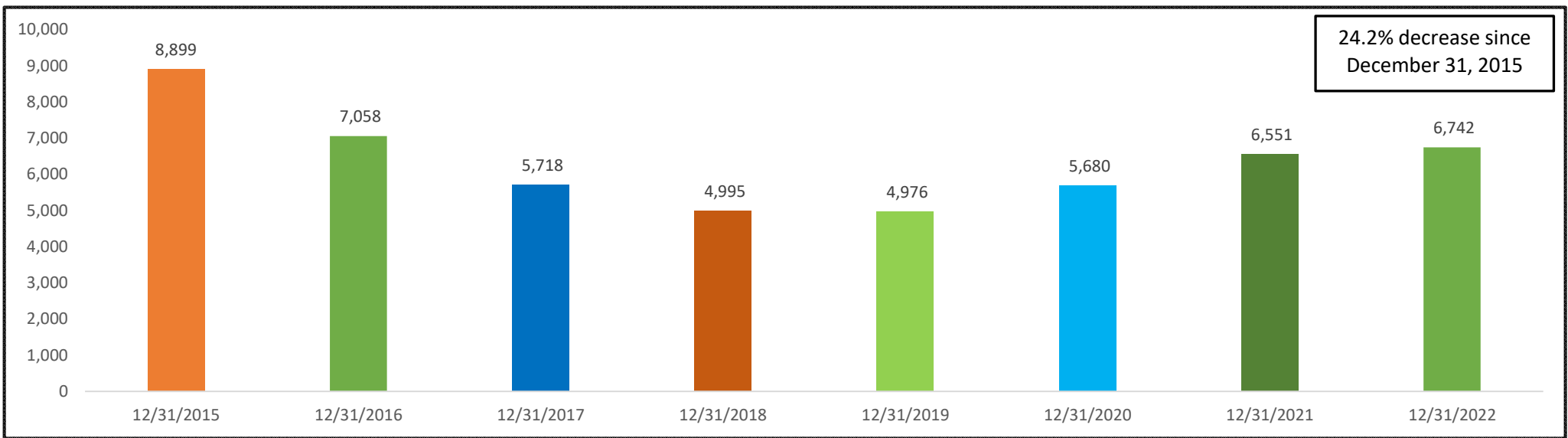
The Hunterdon County Jail was closed and the inmates were moved to Somerset on September 8, 2015. This table removes the Hunterdon inmates from Somerset and only counts them in Hunterdon after September 8, 2015.

The Burlington County Jail female inmates were moved to Atlantic. This table does not show the Burlington females in Atlantic but shows them in Burlington.

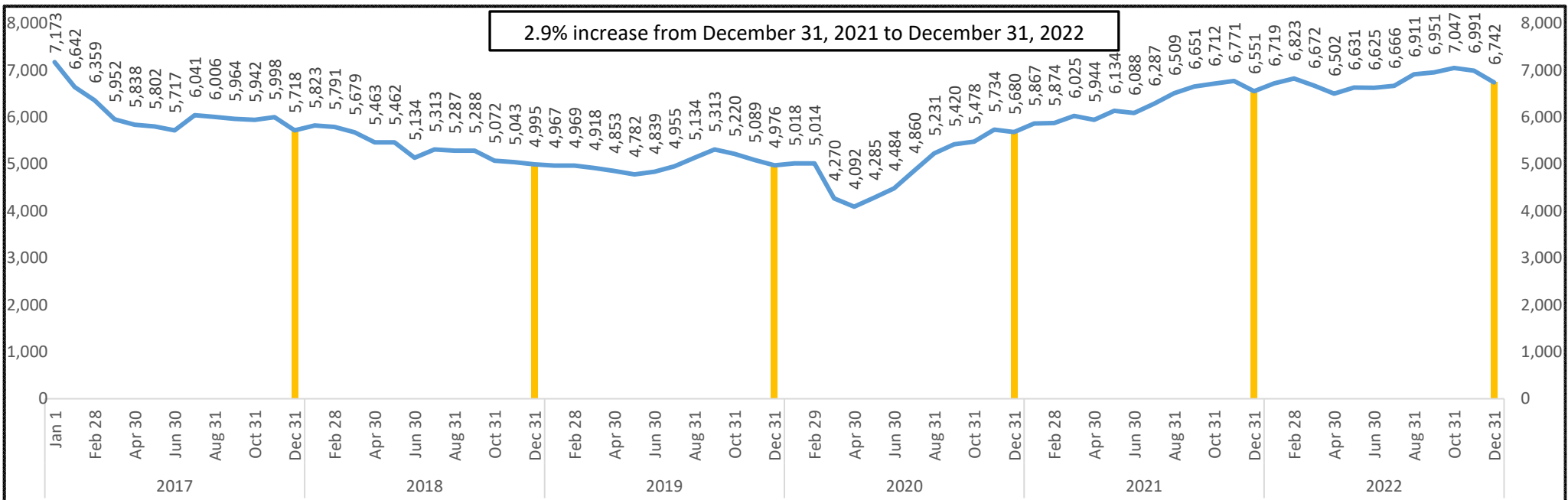
In April and May 2017 nonsentenced pretrial jail population data was reviewed by the county jails and feedback was given. We will continue to use the nonsentenced pretrial jail population numbers in reports.

These numbers provide a preliminary summary of Criminal Justice Reform data. Statistics continue to be reviewed, revised, and validated.

Chart C - Supplemental Graphs Nonsentenced Pretrial Jail Population December 31, 2016 - 2022 December 31, 2015 and December 31, 2016 -2022



January 1, 2017 to December 31, 2022



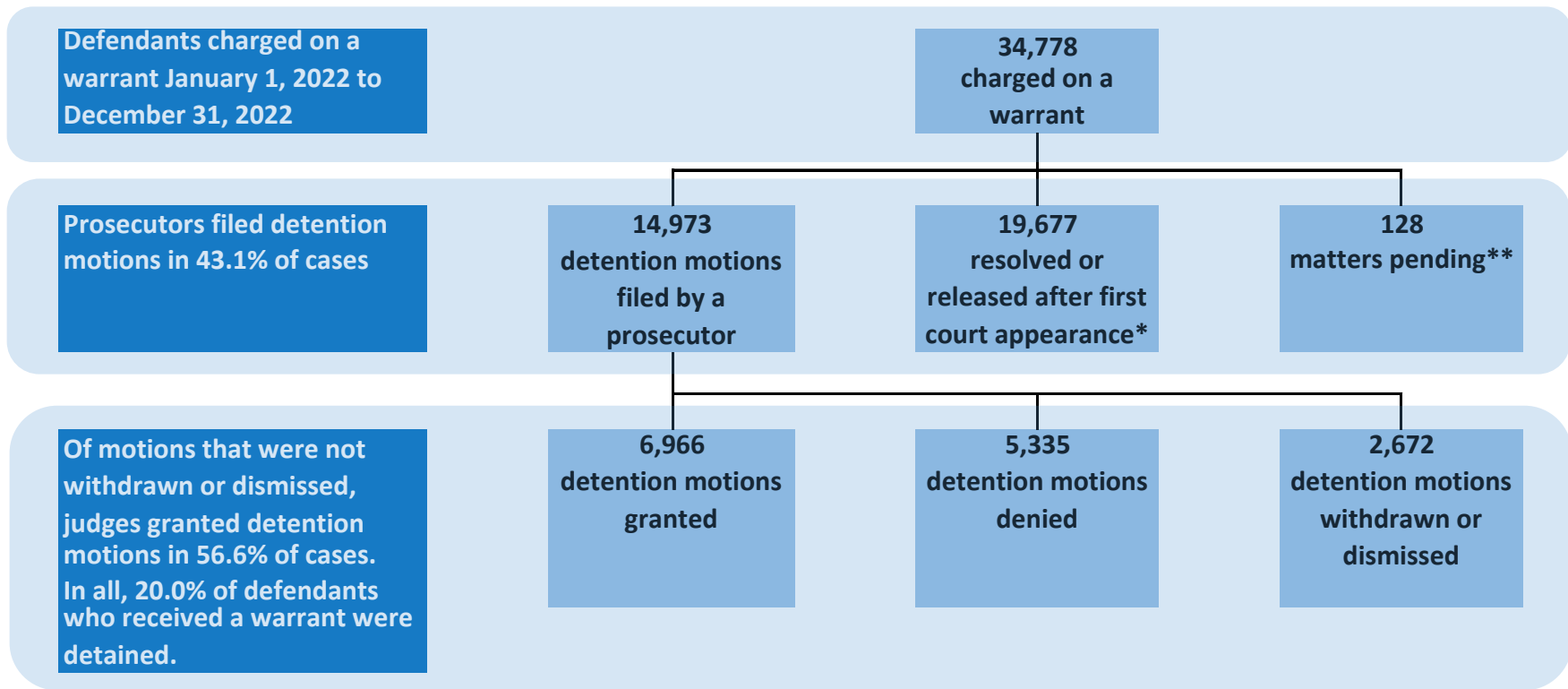
Effective January 2022, this chart contains an additional year of data including date-in-time comparisons that go back seven years.

These numbers provide a preliminary summary of Criminal Justice Reform data. Statistics continue to be reviewed, revised, and validated.

Chart D (Warrant)

Pretrial Detention Decisions

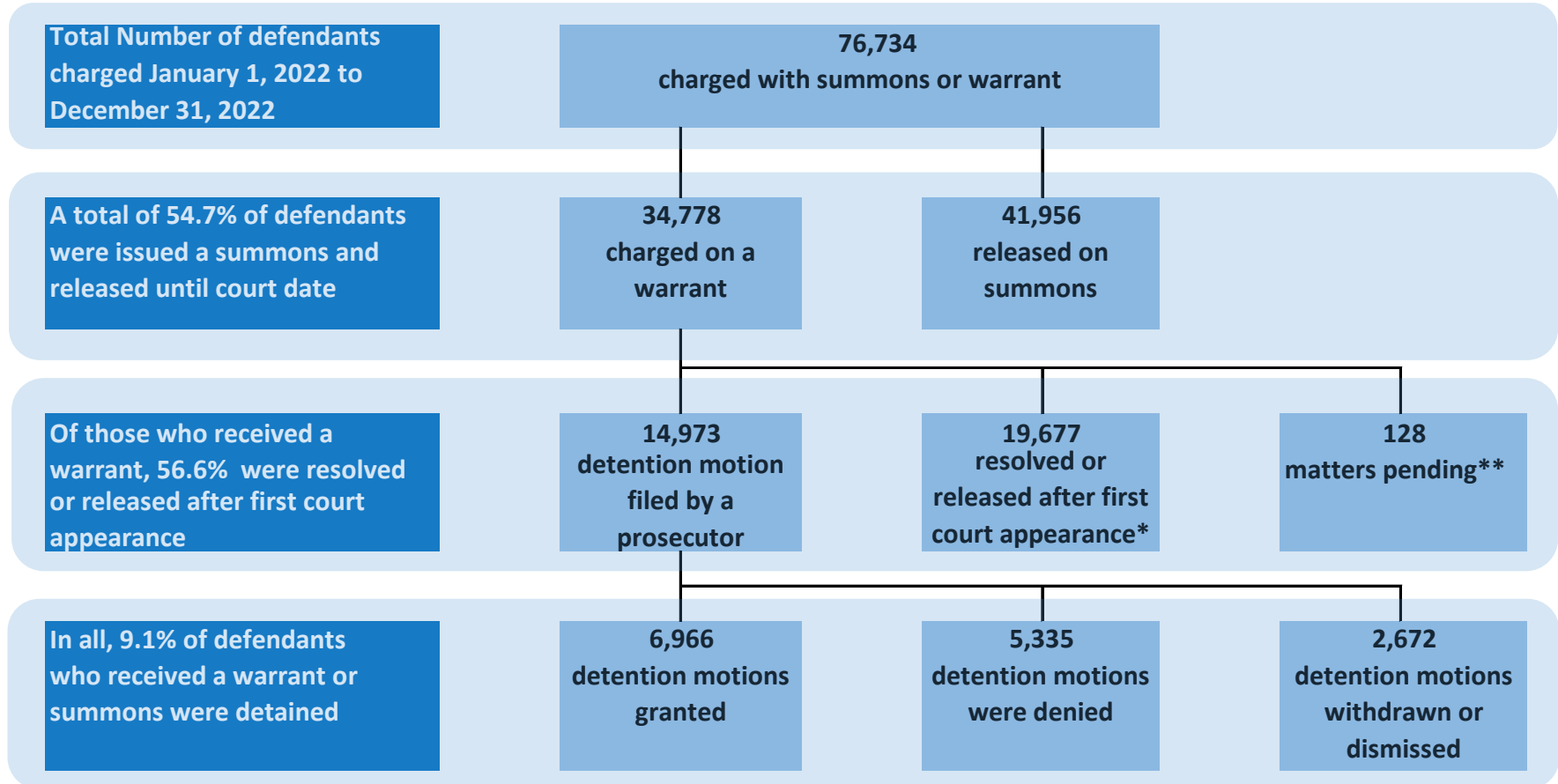
January 1, 2022 - December 31, 2022



Summary Statistics (Warrant Cases)	Detention 20.0%	Pretrial Release* 79.6%	Pending 0.4%
* this includes cases that were addressed prior to release decisions (1,091)			
** as of January 17th, 2023			

These numbers provide a preliminary summary of Criminal Justice Reform data. Statistics continue to be reviewed, revised, and validated.

Chart D (Summons or Warrant) Pretrial Detention Decisions January 1, 2022 - December 31, 2022



Summary Statistics (Warrant and Summons Cases)	Detention 9.1%	Pretrial Release* 90.8%	Pending 0.2%
* this includes cases that were addressed prior to release decisions (1,091)			
** as of January 17th, 2023			

Percentage do not sum up to 100 due to rounding.

Chart D1 - Summons and Warrants issued by County

January 1, 2022 - December 31, 2022

County	Total Defendants	Released on Summons	Percent Released on Summons	Issued Warrants and Committed to Jail	Percent Issued Warrants
Atlantic	4,068	2,957	72.7%	1,111	27.3%
Bergen	4,479	2,967	66.2%	1,512	33.8%
Burlington	3,584	2,263	63.1%	1,321	36.9%
Camden	7,867	4,374	55.6%	3,493	44.4%
Cape May	1,246	753	60.4%	493	39.6%
Cumberland	3,175	2,142	67.5%	1,033	32.5%
Essex	9,084	3,155	34.7%	5,929	65.3%
Gloucester	2,919	1,899	65.1%	1,020	34.9%
Hudson	6,313	2,430	38.5%	3,883	61.5%
Hunterdon	642	428	66.7%	214	33.3%
Mercer	4,498	1,970	43.8%	2,528	56.2%
Middlesex	5,482	3,364	61.4%	2,118	38.6%
Monmouth	4,551	2,834	62.3%	1,717	37.7%
Morris	1,844	1,254	68.0%	590	32.0%
Ocean	4,300	2,428	56.5%	1,872	43.5%
Passaic	5,050	2,219	43.9%	2,831	56.1%
Salem	891	582	65.3%	309	34.7%
Somerset	1,176	530	45.1%	646	54.9%
Sussex	686	506	73.8%	180	26.2%
Union	4,079	2,511	61.6%	1,568	38.4%
Warren	800	390	48.8%	410	51.3%
State	76,734	41,956	54.7%	34,778	45.3%

Chart D2 – Defendants Issued Warrants and Released – CJP Hearing Results by County

January 1, 2022 - December 31, 2022

County	Defendants Issued Warrants and Committed to Jail	Defendants Addressed		Defendants Released - no Detention Motion Filed	Percent no Detention Motion Filed	Defendants held in Jail - Detention Motion Filed	Percent Detention Motion Filed
		prior to Release Decision	Percent Addressed prior to Release				
Atlantic	1,111	28	2.5%	166	14.9%	911	82.0%
Bergen	1,512	32	2.1%	880	58.2%	599	39.6%
Burlington	1,321	26	2.0%	585	44.3%	710	53.7%
Camden	3,493	93	2.7%	1,778	50.9%	1,621	46.4%
Cape May	493	17	3.4%	109	22.1%	366	74.2%
Cumberland	1,033	41	4.0%	162	15.7%	826	80.0%
Essex	5,929	412	6.9%	3,591	60.6%	1,896	32.0%
Gloucester	1,020	15	1.5%	420	41.2%	584	57.3%
Hudson	3,883	98	2.5%	2,552	65.7%	1,215	31.3%
Hunterdon	214	5	2.3%	115	53.7%	94	43.9%
Mercer	2,528	72	2.8%	1,691	66.9%	755	29.9%
Middlesex	2,118	90	4.2%	1,143	54.0%	865	40.8%
Monmouth	1,717	25	1.5%	1,020	59.4%	660	38.4%
Morris	590	25	4.2%	252	42.7%	306	51.9%
Ocean	1,872	16	0.9%	921	49.2%	935	49.9%
Passaic	2,831	47	1.7%	1,779	62.8%	995	35.1%
Salem	309	11	3.6%	17	5.5%	281	90.9%
Somerset	646	9	1.4%	334	51.7%	303	46.9%
Sussex	180	4	2.2%	90	50.0%	86	47.8%
Union	1,568	22	1.4%	788	50.3%	754	48.1%
Warren	410	3	0.7%	193	47.1%	211	51.5%
State	34,778	1,091	3.1%	18,586	53.4%	14,973	43.1%

Chart D3 - Detention Motion Results by County

January 1, 2022 - December 31, 2022

County	<u>Total</u> <u>Detention</u> <u>Motions Filed</u>	Released - Detention Motion Withdrawn	<u>Percent of Total</u> <u>Detention</u> <u>Motions Filed</u>	Released - Detention Motion Dismissed	<u>Percent of</u> <u>Total</u> <u>Detention</u> <u>Motions Filed</u>	<u>Total</u> <u>Decisions by a</u> <u>Judge</u>	Detained - Detention Motion Granted	<u>Percent of</u> <u>Decisions by a</u> <u>Judge</u>	Released - Detention Motion Denied	<u>Percent of</u> <u>Decisions by a</u> <u>Judge</u>
Atlantic	911	25	2.7%	2	0.2%	884	554	62.7%	330	37.3%
Bergen	599	168	28.0%	2	0.3%	429	301	70.2%	128	29.8%
Burlington	710	113	15.9%	5	0.7%	592	332	56.1%	260	43.9%
Camden	1,621	598	36.9%	0	0.0%	1,023	602	58.8%	421	41.2%
Cape May	366	21	5.7%	4	1.1%	341	199	58.4%	142	41.6%
Cumberland	826	56	6.8%	0	0.0%	770	355	46.1%	415	53.9%
Essex	1,896	300	15.8%	3	0.2%	1,593	976	61.3%	617	38.7%
Gloucester	584	174	29.8%	0	0.0%	410	199	48.5%	211	51.5%
Hudson	1,215	71	5.8%	5	0.4%	1,139	528	46.4%	611	53.6%
Hunterdon	94	41	43.6%	0	0.0%	53	39	73.6%	14	26.4%
Mercer	755	248	32.8%	0	0.0%	507	310	61.1%	197	38.9%
Middlesex	865	306	35.4%	7	0.8%	552	385	69.7%	167	30.3%
Monmouth	660	61	9.2%	0	0.0%	599	325	54.3%	274	45.7%
Morris	306	51	16.7%	10	3.3%	245	179	73.1%	66	26.9%
Ocean	935	99	10.6%	0	0.0%	836	234	28.0%	602	72.0%
Passaic	995	35	3.5%	1	0.1%	959	636	66.3%	323	33.7%
Salem	281	43	15.3%	0	0.0%	238	100	42.0%	138	58.0%
Somerset	303	19	6.3%	0	0.0%	284	127	44.7%	157	55.3%
Sussex	86	12	14.0%	0	0.0%	74	55	74.3%	19	25.7%
Union	754	86	11.4%	2	0.3%	666	460	69.1%	206	30.9%
Warren	211	104	49.3%	0	0.0%	107	70	65.4%	37	34.6%
State	14,973	2,631	17.6%	41	0.3%	12,301	6,966	56.6%	5,335	43.4%

These numbers provide a preliminary summary of Criminal Justice Reform data. Statistics continue to be reviewed, revised, and validated.

Chart E
Comparison of Initial Release Decisions for Criminal Justice Reform Eligible Defendants and Detention Motions Granted, Denied, Withdrawn or Dismissed
January 1 - October 31, 2021 and January 1 - December 31, 2022

	Defendants		Addressed Prior to Release Decision		ROR		PML1		PML2		PML3		PML3+		Detention	
	Jan-21 to Dec-21	Jan-22 to Dec-22	Jan-21 to Dec-21	Jan-22 to Dec-22	Jan-21 to Dec-21	Jan-22 to Dec-22	Jan-21 to Dec-21	Jan-22 to Dec-22	Jan-21 to Dec-21	Jan-22 to Dec-22	Jan-21 to Dec-21	Jan-22 to Dec-22	Jan-21 to Dec-21	Jan-22 to Dec-22	Jan-21 to Dec-21	Jan-22 to Dec-22
	Atlantic	861	1,111	13	28	32	31	62	130	99	133	145	221	11	8	499
Bergen	1,266	1,512	31	32	104	158	161	231	196	272	432	446	72	71	270	301
Burlington	1,199	1,321	30	26	32	42	175	223	242	243	318	416	61	39	341	332
Camden	3,474	3,493	94	93	58	51	198	215	317	465	1,878	1,883	244	183	685	602
Cape May	493	493	8	17	5	9	34	54	39	46	178	165	1	2	228	199
Cumberland	970	1,033	43	41	33	30	140	163	126	129	216	305	6	6	406	355
Essex	5,221	5,929	299	412	69	111	1,060	1,565	764	703	1,708	1,847	346	285	975	976
Gloucester	801	1,020	13	15	58	70	140	197	175	205	206	316	14	17	195	199
Hudson	2,996	3,883	76	98	307	383	474	792	465	632	888	1,267	196	165	590	528
Hunterdon	104	214	1	5	2	5	18	49	14	43	43	72	2	1	24	39
Mercer	2,308	2,528	43	72	317	270	344	551	253	292	674	726	321	297	356	310
Middlesex	1,879	2,118	57	90	164	183	327	457	236	260	541	604	187	119	367	385
Monmouth	1,484	1,717	25	25	40	47	258	394	247	258	518	649	61	7	335	325
Morris	537	590	9	25	24	22	85	119	77	80	171	155	5	3	166	179
Ocean	1,533	1,872	11	16	62	69	185	324	301	466	542	684	90	79	342	234
Passaic	2,766	2,831	56	47	46	46	694	836	704	635	482	564	58	57	726	636
Salem	292	309	27	11	20	16	30	44	26	39	84	95	3	4	102	100
Somerset	610	646	11	9	33	33	102	162	83	103	204	205	11	7	166	127
Sussex	174	180	1	4	1	7	16	22	37	37	64	50	1	5	54	55
Union	1,458	1,568	22	22	101	61	305	373	221	186	251	346	119	116	439	460
Warren	349	410	7	3	2	8	73	51	43	84	171	191	2	0	51	70
State	30,775	34,778	877	1,091	1,510	1,652	4,881	6,952	4,665	5,311	9,714	11,207	1,811	1,471	7,317	6,966

Note: This report is based on defendant which is defined as a Criminal Justice Reform eligible defendant with CDR2 warrants filed within three days of each other for the defendant. This chart does not include expunged cases.

	Detention Motions Granted				Detention Motions Denied				Detention Motions Withdrawn/Dismissed				Total	
	Number		% of Decisions		Number		% of Decisions		Number		% of Motions		Detention Motions	
	Jan-21 to Dec-21	Jan-22 to Dec-22	Jan-21 to Dec-21	Jan-22 to Dec-22	Jan-21 to Dec-21	Jan-22 to Dec-22	Jan-21 to Dec-21	Jan-22 to Dec-22	Jan-21 to Dec-21	Jan-22 to Dec-22	Jan-21 to Dec-21	Jan-22 to Dec-22	Jan-21 to Dec-21	Jan-22 to Dec-22
Atlantic	499	554	65.6%	62.7%	262	330	34.4%	37.3%	27	27	3.4%	3.0%	788	911
Bergen	270	301	70.1%	70.2%	115	128	29.9%	29.8%	152	170	28.3%	28.4%	537	599
Burlington	341	332	50.4%	56.1%	335	260	49.6%	43.9%	114	118	14.4%	16.6%	790	710
Camden	685	602	62.2%	58.8%	416	421	37.8%	41.2%	614	598	35.8%	36.9%	1715	1,621
Cape May	228	199	60.8%	58.4%	147	142	39.2%	41.6%	71	25	15.9%	6.8%	446	366
Cumberland	406	355	50.2%	46.1%	402	415	49.8%	53.9%	36	56	4.3%	6.8%	844	826
Essex	975	976	51.3%	61.3%	925	617	48.7%	38.7%	282	303	12.9%	16.0%	2182	1,896
Gloucester	195	199	61.9%	48.5%	120	211	38.1%	51.5%	222	174	41.3%	29.8%	537	584
Hudson	590	528	44.2%	46.4%	746	611	55.8%	53.6%	66	76	4.7%	6.3%	1402	1,215
Hunterdon	24	39	72.7%	73.6%	9	14	27.3%	26.4%	33	41	50.0%	43.6%	66	94
Mercer	356	310	57.2%	61.1%	266	197	42.8%	38.9%	220	248	26.1%	32.8%	842	755
Middlesex	367	385	68.3%	69.7%	170	167	31.7%	30.3%	303	313	36.1%	36.2%	840	865
Monmouth	335	325	56.2%	54.3%	261	274	43.8%	45.7%	75	61	11.2%	9.2%	671	660
Morris	166	179	82.2%	73.1%	36	66	17.8%	26.9%	66	61	24.6%	19.9%	268	306
Ocean	342	234	35.8%	28.0%	613	602	64.2%	72.0%	65	99	6.4%	10.6%	1020	935
Passaic	726	636	69.9%	66.3%	312	323	30.1%	33.7%	31	36	2.9%	3.6%	1069	995
Salem	102	100	42.3%	42.0%	139	138	57.7%	58.0%	48	43	16.6%	15.3%	289	281
Somerset	166	127	42.6%	44.7%	224	157	57.4%	55.3%	17	19	4.2%	6.3%	407	303
Sussex	54	55	72.0%	74.3%	21	19	28.0%	25.7%	23	12	23.5%	14.0%	98	86
Union	439	460	53.0%	69.1%	389	206	47.0%	30.9%	79	88	8.7%	11.7%	907	754
Warren	51	70	50.5%	65.4%	50	37	49.5%	34.6%	64	104	38.8%	49.3%	165	211
State	7,317	6,966	55.1%	56.6%	5,958	5,335	44.9%	43.4%	2,608	2,672	16.4%	17.8%	15,883	14,973

Note: The number of granted motions shown on this chart represents all detention motions filed during the process. There may be multiple detention motions filed for a single defendant, i.e., a motion to revoke release or reopen a hearing on a defendant previously released. Table includes complete motions that were granted, denied, withdrawn or dismissed. This chart does not include expunged cases.